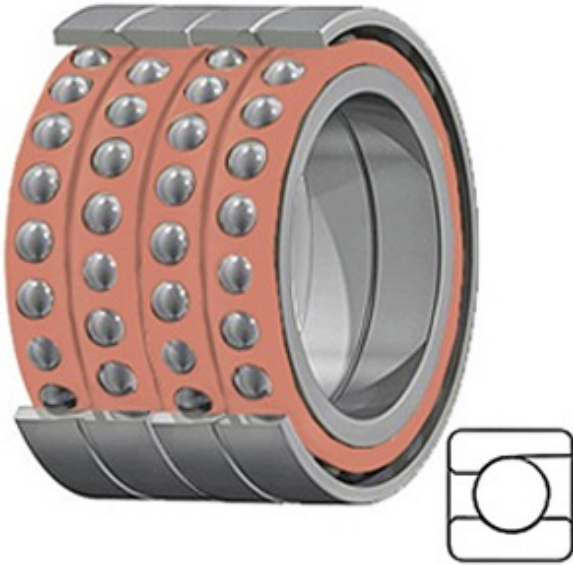




COOPER BEARING LIMITED

3.543 Inch | 90 Millimeter x 4.921 Inch | 125 Millimeter x 2.835 Inch | 72 Millimeter TIMKEN 2MM9318WI QUM Precision Ball Bearings



Bearing No. 2MM9318WI QUM

2MM9318WI QUM Bearing 2D drawings and 3D CAD models

Category	Precision Ball Bearings
Inventory	0.0
Manufacturer Name	TIMKEN
Minimum Buy Quantity	N/A
Weight	2.286
Product Group	B04270
Enclosure	Open
Precision Class	ABEC 7 ISO P4
Material - Ball	Steel
Number of Bearings	4 (1 Quadruplex Set)
Contact Angle	15 Degree
Preload	Medium
Raceway Style	1 Rib Outer Ring
Cage Material	Phenolic
Rolling Element	Ball Bearing
Mounting Arrangement	Quadruplex-Universal
Flush Ground	Yes
Inch - Metric	Metric
Other Features	Single Row Angular Contact Super High Precision
Long Description	90MM Bore; 125MM Outside Diameter; 72MM Width; Open Enclosure; ABEC 7 ISO P4 Precision; Steel Ball Material; 4 (1 Quadruplex Set) Bearings;



COOPER BEARING LIMITED

	15 Degree Contact Angle; Phenolic Cage Material; 1 Rib Out
Category	Precision Ball Bearings
UNSPSC	31171531
Harmonized Tariff Code	8482.10.50.28
Noun	Bearing
Keyword String	Angular Contact Ball
Manufacturer URL	http://www.timken.com
Manufacturer Item Number	2MM9318WI QUM
Weight / LBS	5.04
D	4.921 Inch 125 Millimeter
B	2.835 Inch 72 Millimeter
d	3.543 Inch 90 Millimeter